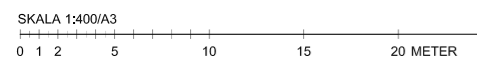
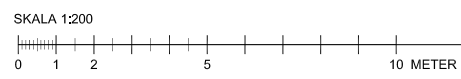
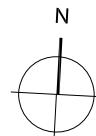
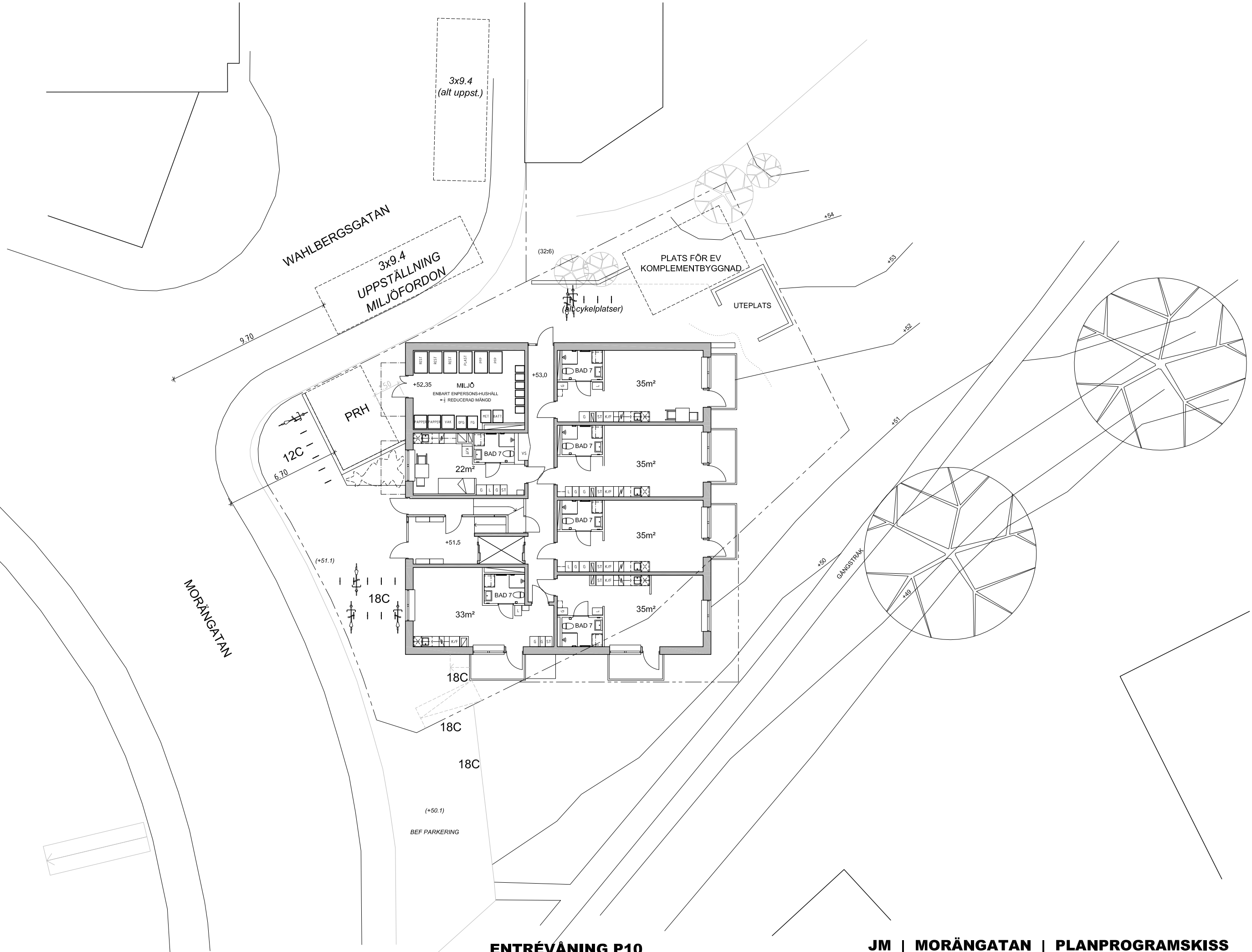


BAGAREGÅRDEN 32:12

SITUATIONSPLAN

JM | MORÄNGATAN | PLANPROGRAMSKISS





ENTRÉVÄNING P10

JM | MORÄNGATAN | PLANPROGRAMSKISS

skala 1:200/A3 | 2024-11-11 arkitekturkompaniet

WAHLBERGSGATAN

MORÄNGATAN

BEF HUSKONTUR
BEF KÄLLARE + 51.2

+53

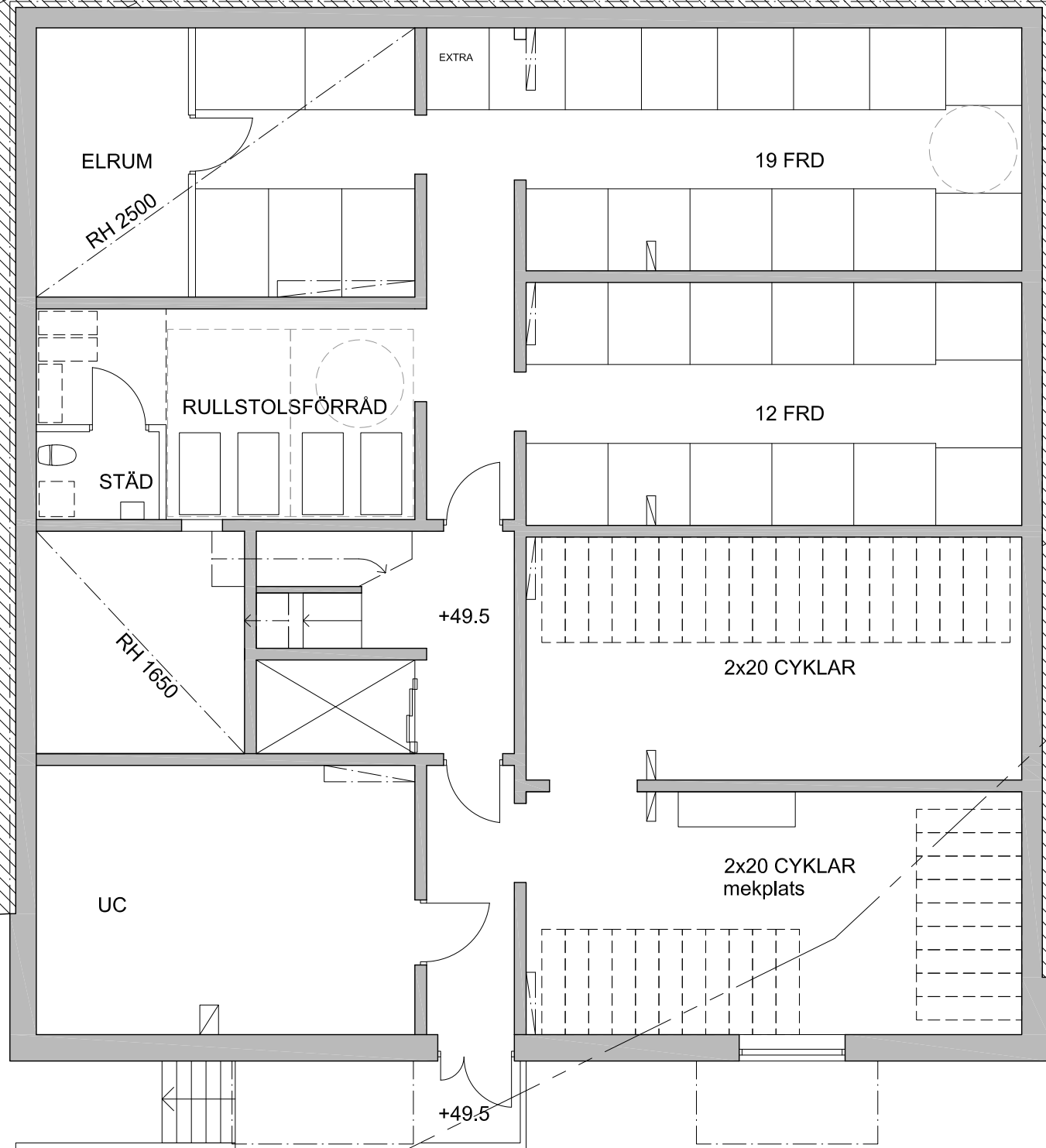
+52

+51

+50

GANGSTRÄK

+49



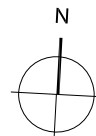
+50.8

+50.8

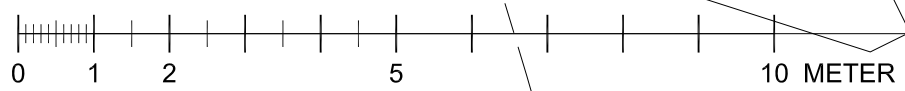
+49.5

+49.5

+50.5



SKALA 1:100



KÄLLARVÅNING P09

JM | MORÄNGATAN | PLANPROGRAMSKISS

skala 1:100/A3 | 2024-11-11 arkitekturkompaniet

VAHLBE

3x9.4
UPPSTÄLLNING
MILJÖFORDON

(32:6)

PLATS FÖR EV
KOMPLEMENTBYGGNAD

+53

UTEPLATS

(alt cykelplatser)

+52

PRH

+52.35
MILJÖ
ENBART ENPERSONS-HUSHÅLL
= 1/3 REDUCERAD MÄNGD

+53.0

35m²

BAD 7

12C
6.70

PAPPER PAPPER VAK OFG FG MET BATT

G ST K/F

+51

22m²

BAD 7

35m²

BAD 7

+51.5

35m²

BAD 7

(+51.1)

33m²

BAD 7

35m²

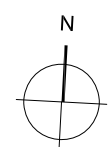
BAD 7

+50

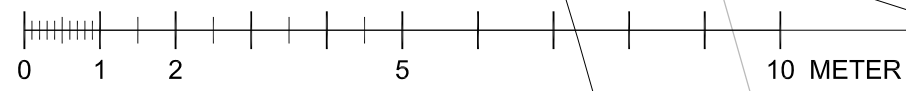
GÅNGSTRÅK

+49

MORÄNGATAN



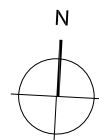
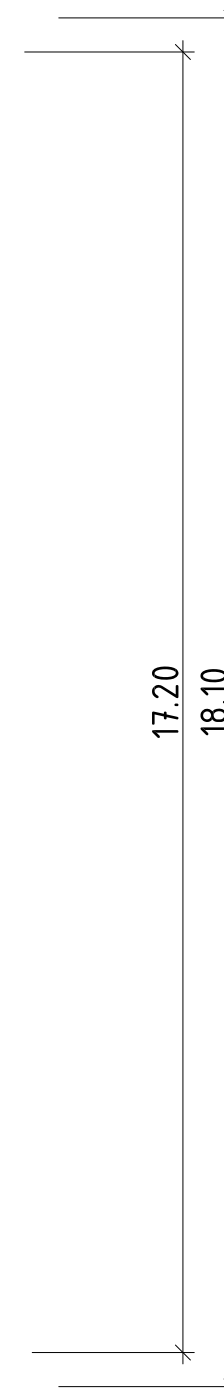
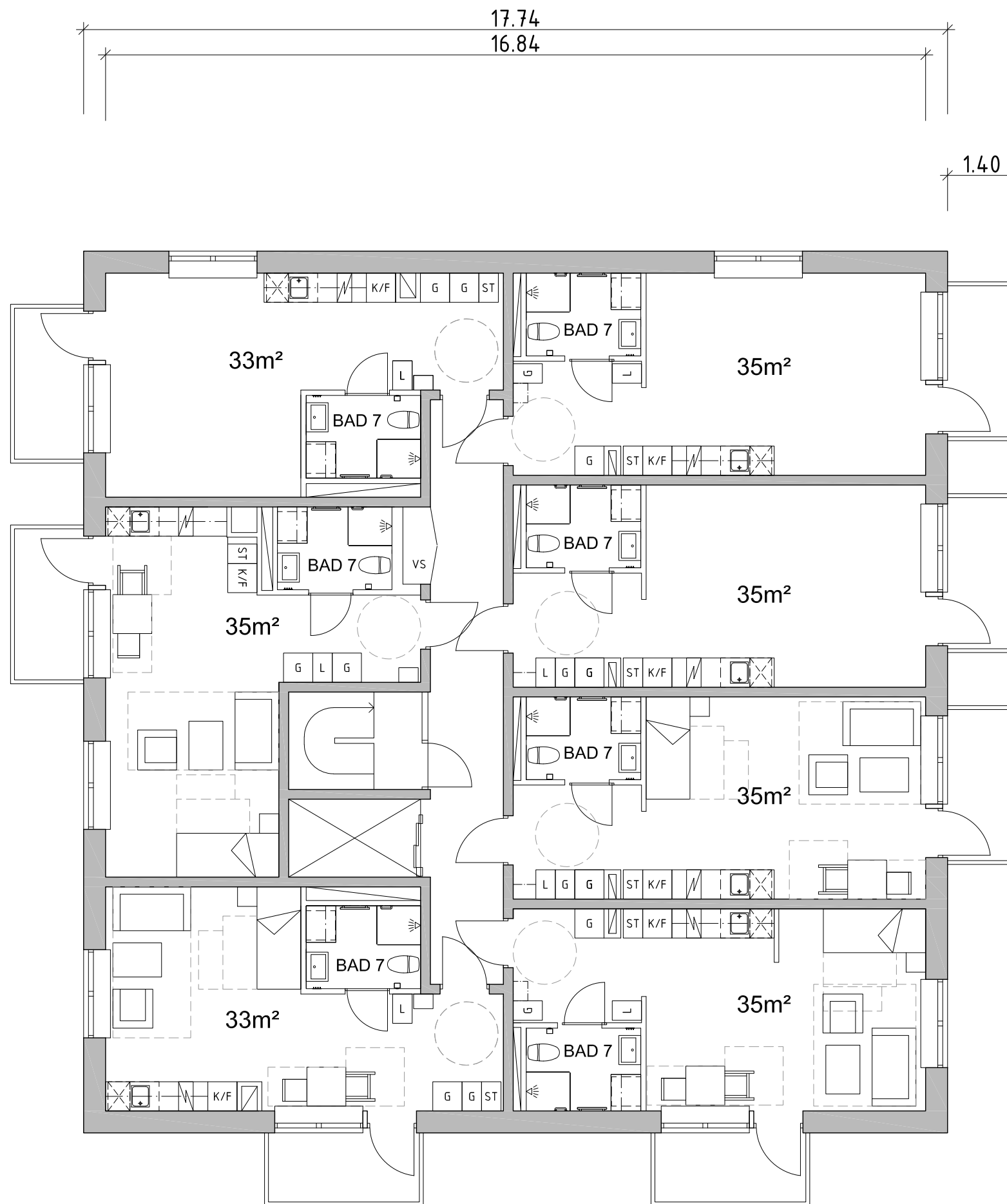
SKALA 1:100



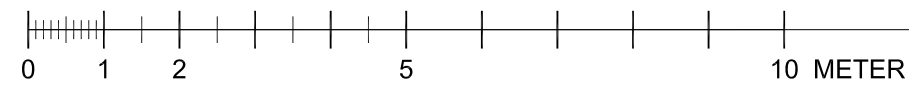
ENTRÉVÄNING P10 1:100

JM | MORÄNGATAN | PLANPROGRAMSKISS

skala 1:100/A3 | 2024-11-11 arkitekturkompaniet



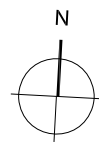
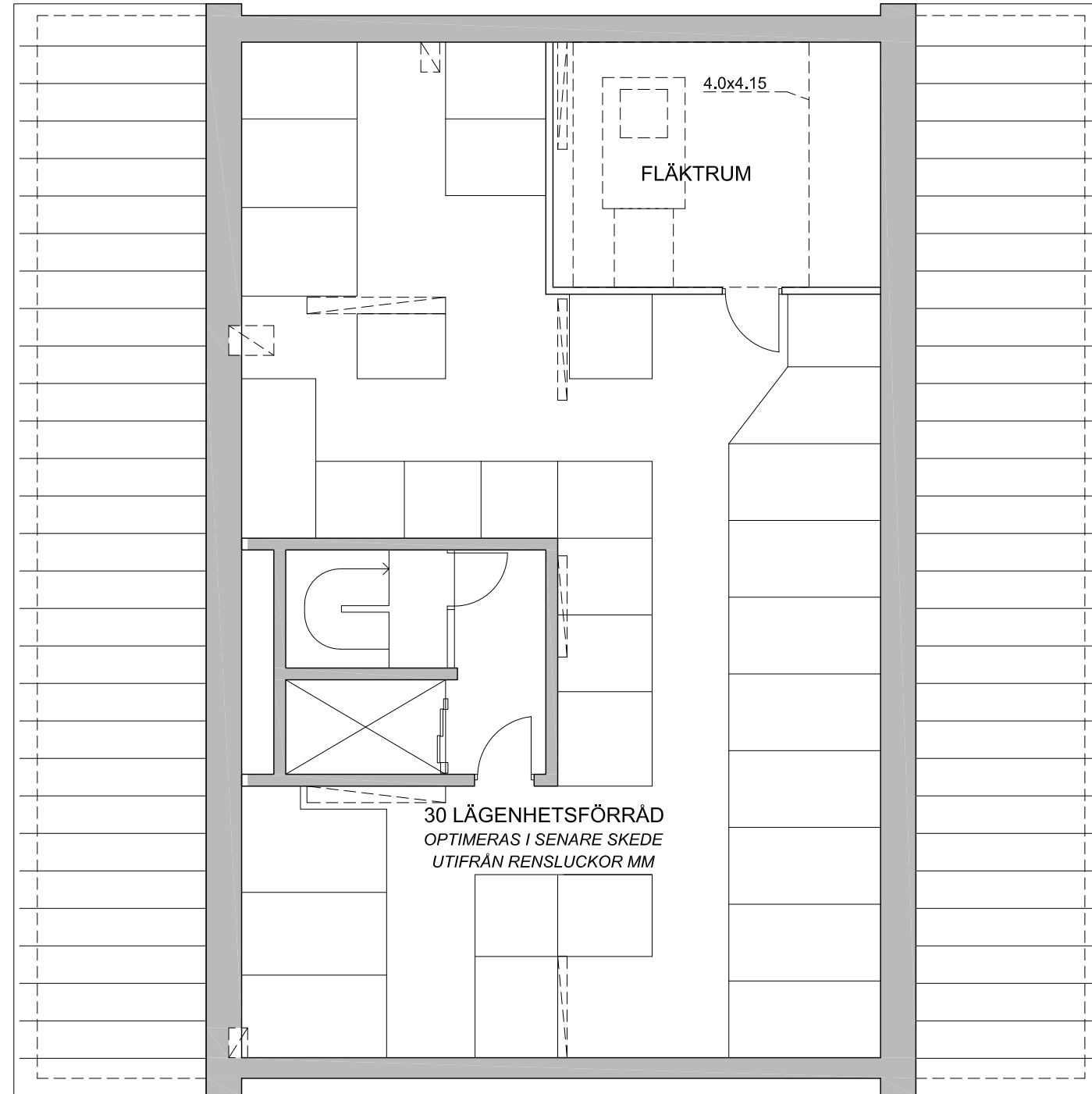
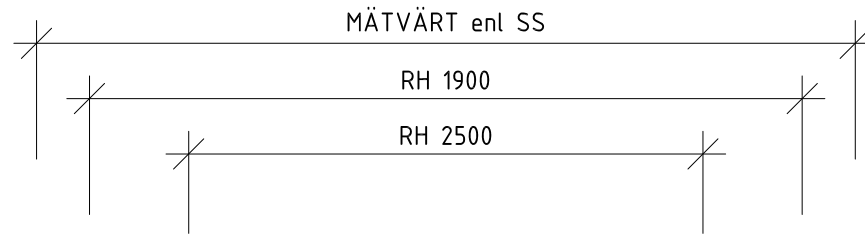
SKALA 1:100



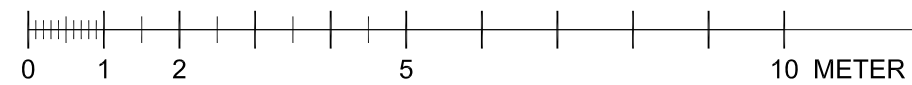
NORMALPLAN P11-P17

JM | MORÄNGATAN | PLANPROGRAMSKISS

skala 1:100/A3 | 2024-11-11 arkitekturkompaniet



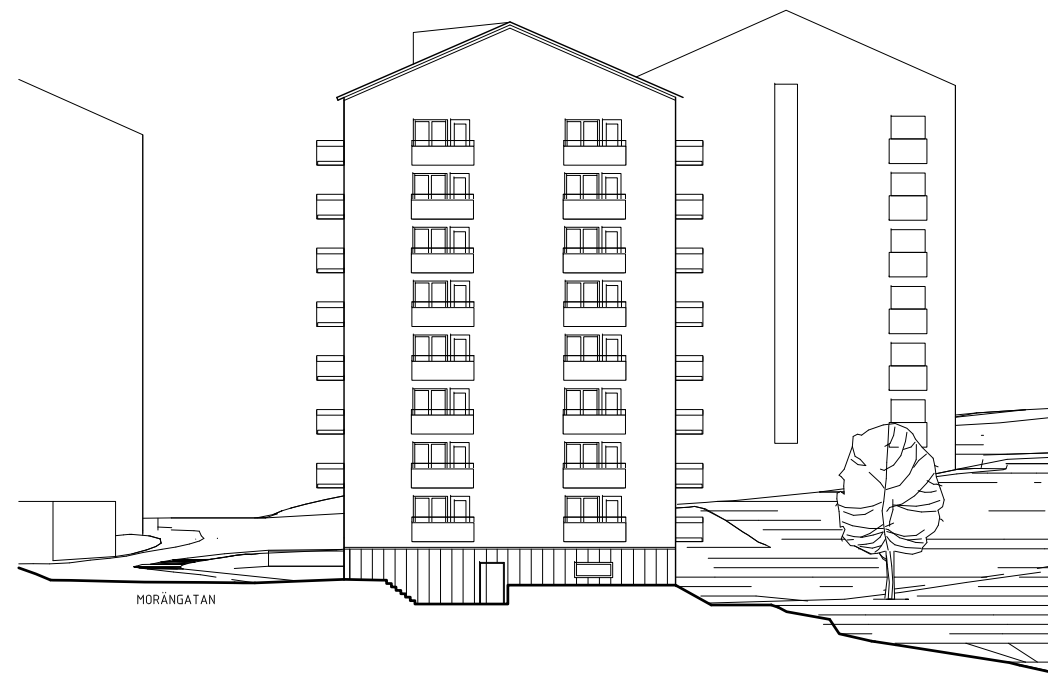
SKALA 1:100



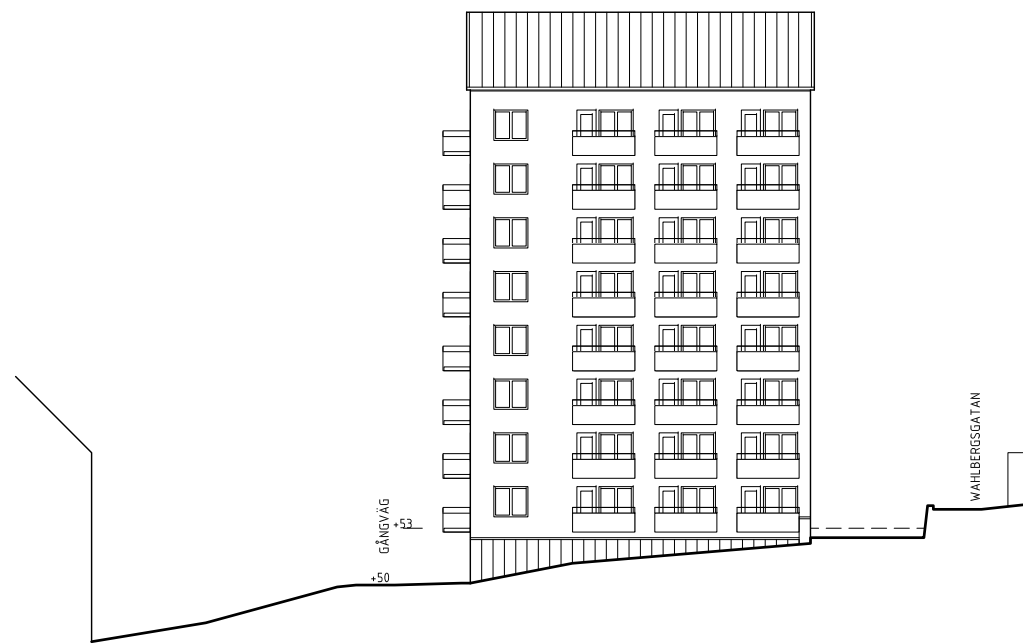
VINDSPLAN P18



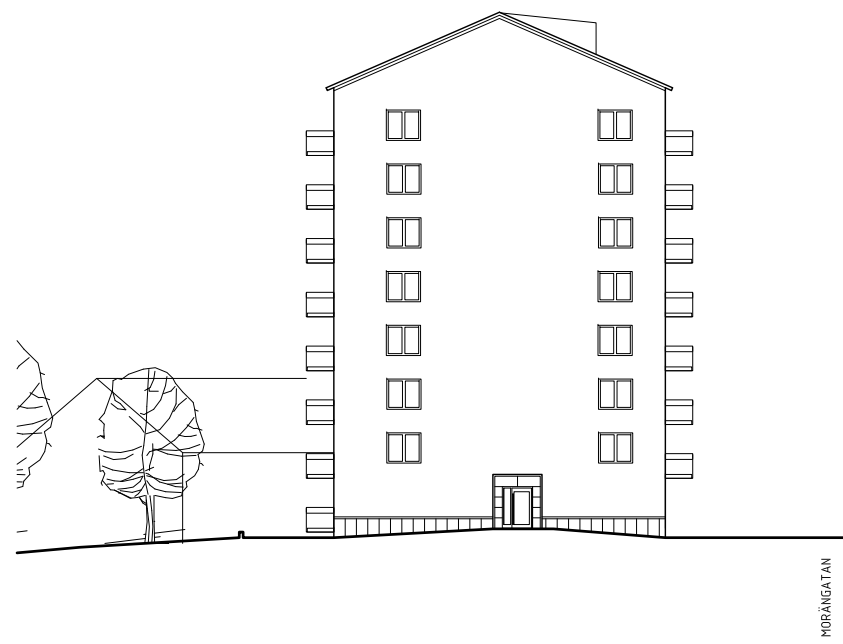
FASAD MOT VÄSTER
MORÄNGATAN



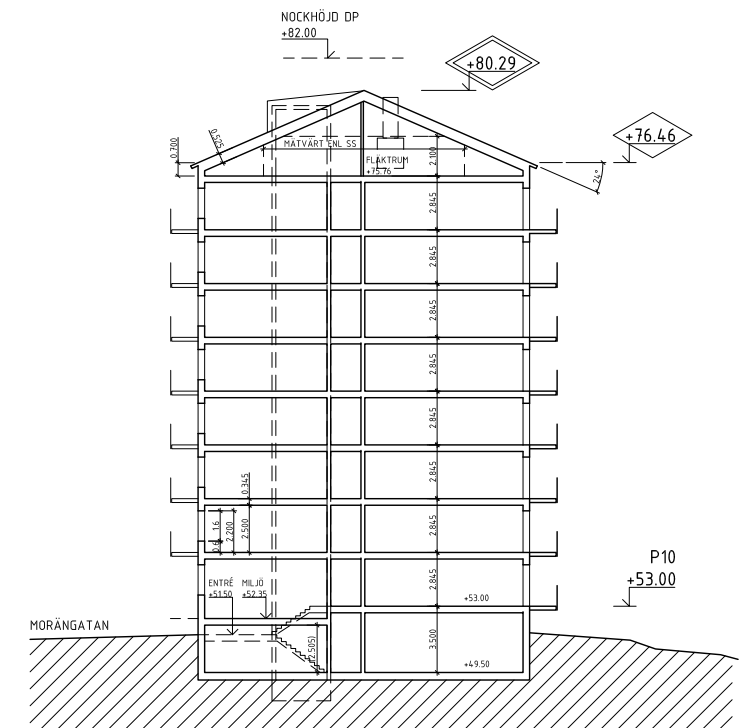
FASAD MOT SÖDER
GÅNGSTRÅKET



FASAD MOT ÖSTER
PARKEN



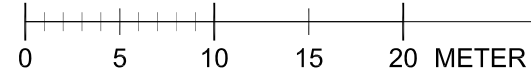
FASAD MOT NORR
WAHLSTRÖMSGATAN



SEKTION

XREF: A-40-F-001.dwg 2024-01-24

SKALA 1:400



FASADER OCH SEKTION

JM | MORÄNGATAN | PLANPROGRAMSKISS

skala 1:400/A3 | 2024-11-11 arkitekturkompaniet